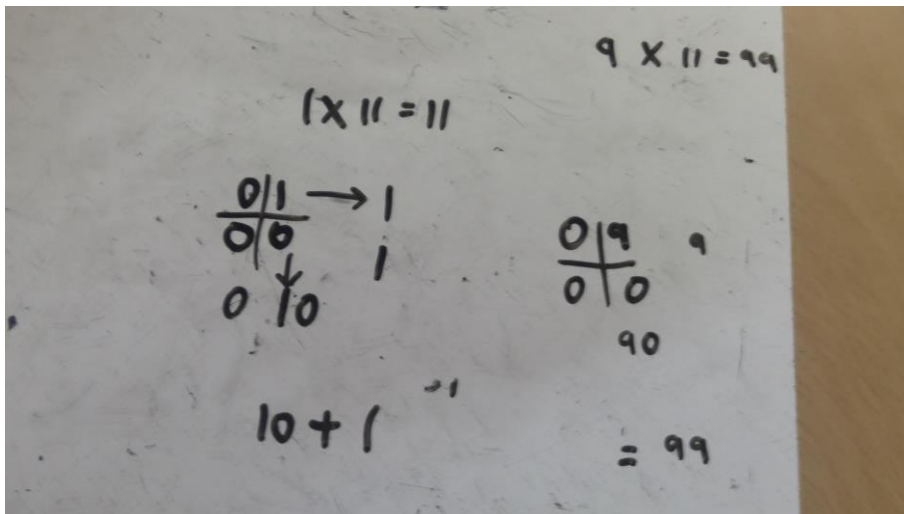


Corners and zero

If all of the digits are zero except the bottom right one, double the digit on the bottom right. The digit is only useful to the top and right.

The digit is only useful to the top and right.



If all of the digits are zero except the bottom left or top right, multiply the bottom left or top right by 11.

If all of the digits are zero except the top left, multiply the top left by 20.

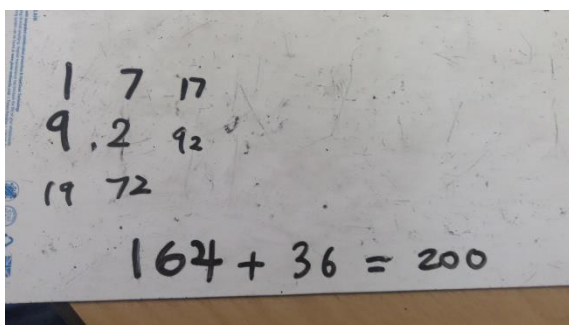
Multiples of eleven on the top = Multiples of eleven on the left

Divide the top number by 11, multiply that by 31.

Multiples of eleven on the right = Multiples of eleven on the bottom = divide by 11 times that by 2 add to original number

These rules are basically rotating the grid anticlockwise.

Add to 200



$$\begin{array}{r} 18 \\ 8 \overline{) 2} \\ \hline 18 \end{array} \quad \begin{array}{r} 18 + 82 \\ = 100 \\ + \\ 18 \quad 82 + 100 \\ \hline 200 \end{array}$$