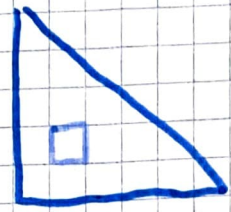



Lee

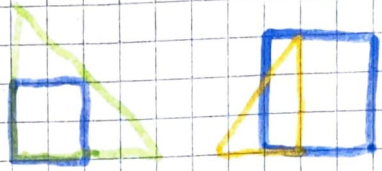
a square. 4

The step is wrong because a square can be smaller than a triangle but the triangle can't fit in the square.

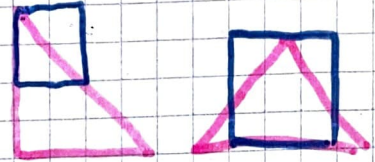




A triangle has three sides. 3

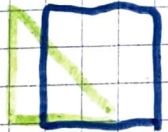
 triangle



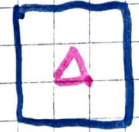
 + 1 side =  square




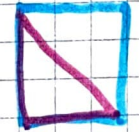
 - 1 side = 

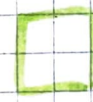



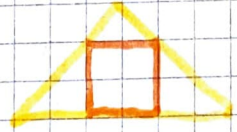
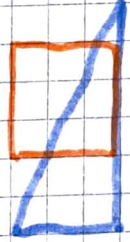
A square has 4 sides. 4





 square



 - 1 side =  triangle



 + 1 side =  pentagon

Triangle in a Square

3 is smaller than 4 3

Tada!!!

