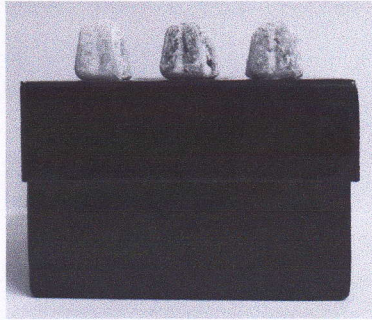


Sweetie Box

Age 5 to 11

Below, you can see two boxes.



Bryony's box



Max's box

The box on the left is Max's. All of Max's sweets are in that box. The box on the right hand is Bryony's. Bryony's sweets are in that box and there are also three more sweets on top of her box. Each box has exactly the same number of sweets inside.

What do you know about the number of sweets each child has? We would love to hear your ideas. You may like to use drawings, writing, numbers, symbols... to help show your thinking.

This task has been inspired by a book chapter written by Carraher, Schliemann and Schwartz (2007)
https://www.researchgate.net/publication/304824539_Early_algebra_algebra_early.

