

Little Man

Age 5 to 7 Challenge Level:

This problem has been inspired by "The Man", a story by Raymond Briggs, which you might like to read.

The Man is much smaller than you and me.
Here is a picture of him standing next to a mug.



Can you estimate how tall he is?

Can you think of something that you have at school or home that is approximately twice as tall as the Man?

What about something that is about half as tall as the Man?

How tall do you think the Man's mug might be?

Can you estimate how many "Man mugs" of tea might fill one of our mugs?

I think mug man is
10 cm because I measured
the mugs and.... the
middle 2 mugs is
10 cm. I measured the
Months of the year is
20 cm. Mr Mugman's Mug
is about 0.83 cm by checking
our heights then divided
it by 10 that tells us
we are 12 mugs tall so ...

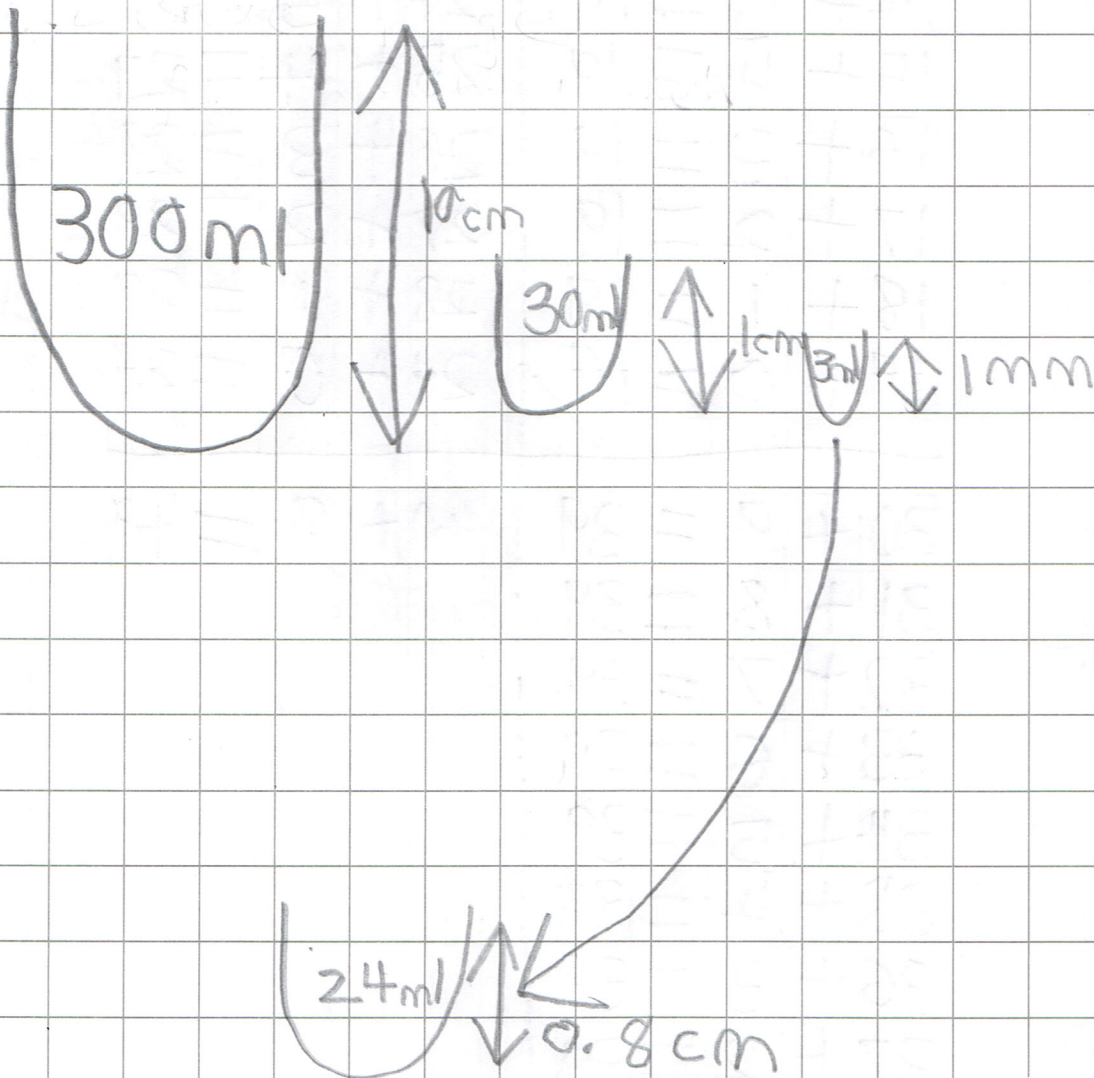
... the tiny mug is $10 \div 12 = 0.83$.
the tiny card is 5cm.

24

48

72

$$96 \times 2 = 192 + 96 = 288 + 12 = 300$$



I think it will take 125
MrMugMansMugs to fill a mug.