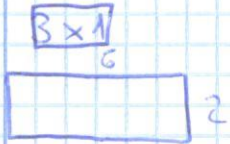
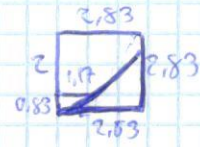
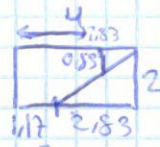
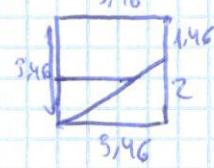
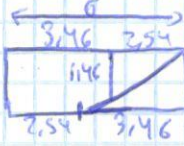


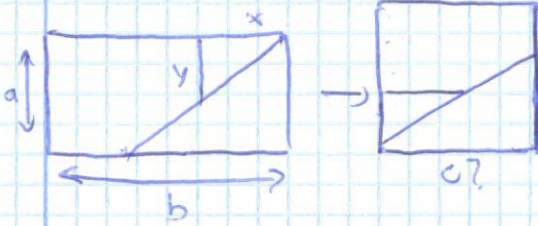
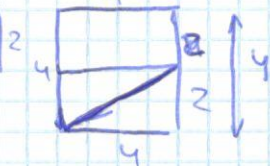
$A=8 \rightarrow \sqrt{8} = 2,83$



$A=12 \rightarrow \sqrt{12} = 3,46$



$A=16 \rightarrow \sqrt{16} = 4$



$C = \sqrt{a \cdot b}$
 $x = b - c$
 $y = c - a$

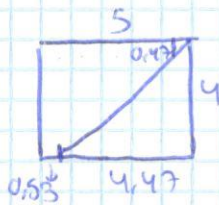


$A=20$
 $\sqrt{20} = 4,47$

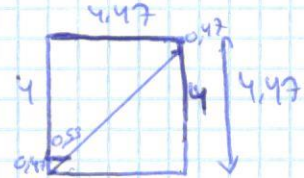
No se cumple, por lo que

5×1 Se divide en 4 cuadrados de $1,25 \times 1$.

4. $1,25 \times 1$



$A=20 \rightarrow \sqrt{20} = 4,47$



Medidas de rectángulos

Nº de rectángulos

$2 \times 1 - 4 \times 1$	→	1
$5 \times 1 - 16 \times 1$	→	4
$17 \times 1 - 36 \times 1$	→	9
$37 \times 1 - 64 \times 1$	→	16
$65 \times 1 - 100 \times 1$	→	25
$101 \times 1 - 144 \times 1$	→	36
$145 \times 1 - 196 \times 1$	→	49
$197 \times 1 - 256 \times 1$	→	64
$257 \times 1 - 324 \times 1$	→	81
$325 \times 1 - 400 \times 1$	→	100
$401 \times 1 - 484 \times 1$	→	121
$485 \times 1 - 576 \times 1$	→	144